

## Platform

0.76 m x 1.83 m low mount platform

Multiple function operation

Full proportional drive joystick control with integral thumb steer switch

Full proportional main boom and swing joystick control

Variable speed dial control for telescope and platform rotate

Selectable creep speed on drive / lift and swing functions

1.83 m articulating jib

180 degree powered platform rotator

Platform console machine status light panel <sup>1</sup>

Load sensing system

AC cable to platform

## Power & Transmission

Deutz 2011L03 (36.4 kW) diesel engine

Engine distress warning / shut down system <sup>2</sup>

Gull-wing hoods

Swing-out engine tray

Spark arresting type muffler

Control ADE™ - Advanced Design Electronics System

Hydrostatic drive transmission

Horn

## Functional Equipment & Accessories

4 degree tilt alarm and indicator light

12 x 16.5 foam filled lug tread tyres

Fixed-width frame (extending axles not required)

Lifting/tie down lugs

Hour meter

Ground control selector switch with key lock

Platform tool tray

12V DC auxiliary power

## Available Options

0.91 m x 1.83 m low mount platform

0.91 m x 2.44 m low mount platform

Side entry with inward swing gate

13 mm air line to platform

Four wheel drive

12 x 16.5 foam filled non marking tyres

14 x 17.5 foam filled lug tread tyres

Semi-track package (includes floating idler system)

Oscillating front axle

On-board 2500W Generator

SkyPower™ Package 7,500 watt on-board generator

<sup>1</sup> Provides indicator lights at platform control console for system distress, low fuel, tilt light, and foot switch status.

<sup>2</sup> Low oil pressure and high coolant temperature alarms with shut-down enabled/disabled by analyser.

<sup>3</sup> Available when integrated with the SkyPower™ package.

<sup>4</sup> Available only with two wheel drive on models 400S and 460SJ.

<sup>5</sup> Includes all-motion alarm and flashing amber beacon.

<sup>6</sup> Includes platform mounted work lights and head & tail lights.

<sup>7</sup> Includes console cover, boom wipers and cylinder bellows.

## Available Options

SkyWelder® Package 250 amp welder in the platform <sup>3</sup>

Tow Package <sup>4</sup>

All motion alarm

Alarm package <sup>5</sup>

Light package <sup>6</sup>

Head and tail lights

Flashing amber beacon

Plugs & Sockets

Hostile environment package <sup>7</sup>

Catalytic Purifier Muffler

Soft Touch Proximity System

Corner storage tray



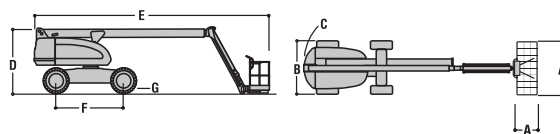
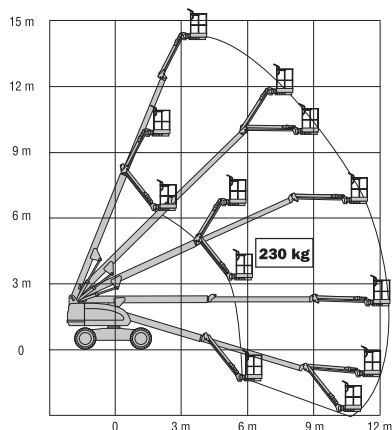
**JLG Industries Inc.**  
 Polaris Avenue 63  
 2132 JH Hoofddorp  
 The Netherlands  
 Tel: +31 (0)23 565 5665  
 Fax: +31 (0)23 557 2493  
 e-mail address: europe@jlg.com  
**www.jlgeurope.com**  
 An Oshkosh Corporation Company

Printed in Belgium  
 FORM No.: DS035  
 PART NO.: DS035-ENGLISH



	<b>460SJ</b>
Platform height	14.02 m
Horizontal outreach	12.34 m
Swing (continuous)	360°
Platform capacity – unrestricted	230 kg
Optional platform capacity	—
Platform rotator (hydraulic)	180°
Jib – overall length	1.83 m
Jib - range of articulation	130° (+70°/-60°)
A. Platform size	0.76 m x 1.83 m
B. Overall width	2.30 m
C. Tailswing (working condition)	0.86 m
D. Stowed height	2.39 m
E. Stowed length	8.84 m
F. Wheelbase	2.34 m
G. Ground clearance	0.32 m
Machine weight <sup>1</sup>	7,850 kg
Maximum ground bearing pressure	4.42 kg/cm <sup>2</sup>
Maximum tyre load	3,357 kg
Drive speed 2WD	7.2 km/h
Drive speed 4WD	7.2 km/h
Gradeability 2WD	30 %
Gradeability 4WD	45 %
Tyres	12 x 16.5 Foam Filled
Axle oscillation (optional)	0.20 m
Turning radius – inside	2.01 m
Turning radius – outside	5.00 m
Diesel engine Deutz 2011L03	36.4 kW
Diesel engine (option) CAT C2.2	37 kW
Fuel tank capacity	98 L
Hydraulic system	197 L
Auxiliary power	12V DC

<sup>1</sup> Certain options or country standards may increase weight and/or dimensions.



©2008, JLG Industries, Inc.

JLG is continually researching and developing products and reserves the right to make modifications without prior notice. All data in this document is indicative. Certain options or country standards will increase weight. Specifications may change to meet country standards or with the addition of optional equipment.

