



# Cat<sup>®</sup> 910

## COMPACT WHEEL LOADER

### FEATURES:

- **Cat<sup>®</sup> C3.6 Engine** – EU Stage V and U.S. EPA Tier 4 Final compliant.
- **Cat Optimized Z-bar Loader Linkage** – The Cat Optimized Z-bar Loader linkage combines the digging efficiency of a traditional Z-bar with tool carrier capabilities for great performance and versatility. With parallel lift and high tilt forces throughout the working range you can safely and confidently handle loads with precise control.
- **Work Tools** – The 910 features the Cat exclusive, Performance Series Buckets, as well as high visibility pallet forks. These tools enhance productivity and are available with either an Integrated Toolcarrier (IT) or ISO (wide) coupler style. Legacy coupler tools such as brooms, grapple buckets, multi-purpose buckets and other work tools remain compatible.
- **Hydraulics and Controls** – State of the art electro-hydraulic system provides low effort, fine control with fast cycle times. All-in-one joystick helps keep eyes on the work. Operator can adjust machine responsiveness with the push of a button, which allows the operator to set up the machine exactly the way they want it based on the application.
- **Tuned Drivetrain** – Smooth shifting and powerful acceleration is matched with modulated hydrostatic braking in the inching/braking pedal, creating a rhythm for material moving. Creeper and electronic engine speed control makes broom and snow blower work easy. Operator tunes between smooth or aggressive shifting with the push of a button.
- **Cab** – All around visibility is further enhanced with the availability of a rearview camera. The deluxe cab ensures operator comfort with a heated, air suspension seat and easy to use controls. Available features such as Implement and Hystat Aggressiveness, Ride Control, Lift and Tilt Kickouts, Fork/Bucket Mode and Rimpull Control allow the operator to customize the machine via a soft touch keypad.
- **Serviceability** – Extended service intervals and excellent service access make daily checks quick and easy allowing you to get to work sooner.
- **Efficiently Powerful** with its high full turn tipping loads, powerful breakout forces and efficient engine power delivers a balanced solution for all customer applications.
- **Standard Fuel Savings Features** such as Eco Mode, On Demand Cooling Fan, and Auto Engine Idle Shutdown make the 910 both powerful and fuel efficient.

## Specifications

### Engine

Engine Model	Cat C3.6	
Maximum Gross Power:		
Maximum Engine Speed	2,350 RPM	
SAE J1995	83 kW	111 hp
ISO 14396	82 kW	110 hp
ISO 14396 (DIN)	82 kW	111 hp
Rated Net Power:		
Rated Engine Speed	2,200 RPM	
SAE J1349	74 kW	99 hp
ISO 9249	73 kW	98 hp
ISO 9249 (DIN)	73 kW	99 hp
Displacement	3.6 L	220 in <sup>3</sup>
Bore	98 mm	3.86 in
Stroke	120 mm	4.72 in

### Engine (continued)

Maximum Gross Torque:		
SAE J1995	454 N-m	335 lbf-ft
ISO 14396	450 N-m	332 lbf-ft
Maximum Net Torque:		
SAE J1349	446 N-m	329 lbf-ft
ISO 9249	443 N-m	327 lbf-ft

- Engine meets Tier 4 Final/Stage V emission standards.
- Net power advertised is the power available at the flywheel plus front drive implement pump when the engine is equipped with fan, air cleaner, muffler and alternator.



# 910 Compact Wheel Loader

## Buckets

Bucket Capacities – General Purpose	1.3-1.9 m <sup>3</sup>	1.7-2.5 yd <sup>3</sup>
Bucket Capacities – Light Material	2.5-3.5 m <sup>3</sup>	3.3-4.6 yd <sup>3</sup>

## Steering

Steering Articulation Angle (each direction)	40 degrees	
Maximum Flow – Steering Pump	66 L/min	17 gal/min
Maximum Working Pressure – Steering Pump	18 500 kPa	2,683 psi
Steering Cycle Times (full left to full right):		
At 2,350 RPM: 90 RPM steering wheel speed	3.2 seconds	
Number of Steering Wheel Turns – full left to full right or full right to full left	3.75 turns	

## Loader Hydraulic System

Maximum Flow – Implement Pump	122 L/min	32 gal/min
3rd Function, Maximum Flow	90 L/min	24 gal/min
4th Function, Maximum Flow	90 L/min	24 gal/min
Maximum Working Pressure – Implement Pump	23 500 kPa	3,408 psi
Relief Pressure – Tilt Cylinder	34 000 kPa	4,931 psi
3rd Function Maximum Working Pressure	21 000 kPa	3,046 psi
4th Function Maximum Working Pressure	21 000 kPa	3,046 psi

### Hydraulic Cycle Times:

Raise (ground level to maximum lift)	5.2 seconds	
Dump (at maximum reach)	1.4 seconds	
Rack Back	2.2 seconds	
Float Down (maximum lift to ground level)	3.7 seconds	
Total Cycle Time	12.5 seconds	

## Service Refill Capacities

Fuel Tank	165 L	43.6 gal
Cooling System	21.5 L	5.7 gal
Engine Crankcase	10 L	2.6 gal
Axles:		
Front Center Differential	7.5 L	2.0 gal
Rear Center Differential	7.5 L	2.0 gal
Hydraulic System (including tank)	98 L	25.9 gal
Hydraulic Tank	55 L	14.5 gal
Transmission	3.2 L	0.8 gal
Diesel Exhaust Fluid (DEF) Tank	18 L	4.8 gal

- DEF used in Cat SCR systems must meet the requirements outlined in the International Organization for Standardization (ISO) standard 22241-1.

## Transmission

Forward and Reverse:		
Speed Range 1*	10 km/h	6.3 mph
Speed Range 2*	20 km/h	12.5 mph
Speed Range 3	40 km/h	25 mph

\*Creeper Control allows speed control from a stand still up to 10 km/h (6.3 mph). The Creeper Control will only work in Range 1.

## Tires

Standard Size	15.5 R25 L2 XTLA
Other Choices Include:	17.5 R25 L2 XTLA
	15.5 R25 L3 XHA2
	17.5 R25 L3 XHA2
	17.5-25 L2/L3 SGL
	17.5-25 L3 HRL D/L-3A
	17.5 R25 L2 Snow

- Other tire choices are available. Contact your Cat dealer for details.
- In certain applications, the loader's productive capabilities may exceed the tire's tonnes-km/h (ton-mph) capabilities.
- Caterpillar recommends that you consult a tire supplier to evaluate all conditions before selecting a tire model.

## Cab

ROPS	ISO 3471:2008
FOPS	EN ISO 3449:2008 (ISO 3449:2005)

- Cab and Rollover Protective Structures (ROPS) are standard in North America and Europe.
- The declared dynamic operator sound pressure levels per ISO 6396:2008\*, when the cab is properly installed and maintained, is 77 dB(A).
- The labelled sound power level for the CE marked configurations when measured according to the test procedure and conditions specified in 2000/14/EC (as amended by 2005/88/EC) is 103 dB(A).

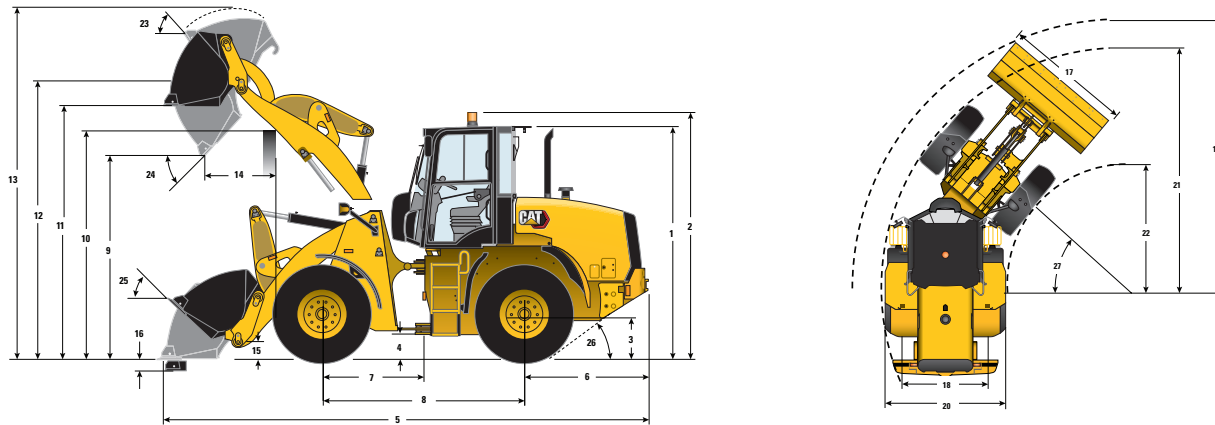
\*The measurements were conducted with the cab doors and windows closed.

## Axles

Front	Fixed
	Locking differential (standard)
Rear	Oscillating ±11 degrees
	Locking differential (Standard)

# 910 Compact Wheel Loader

## Dimensions and Operating Specifications (All dimensions are approximate. Dimensions vary with bucket and tire choice.)



\*Vary with bucket. \*\*Vary with tire.

	Standard Lift – IT		Standard Lift – ISO		Standard Lift – Pin On	
Bucket @100% fill factor used for below data	1.3 m <sup>3</sup>	1.7 yd <sup>3</sup>	1.3 m <sup>3</sup>	1.7 yd <sup>3</sup>	1.4 m <sup>3</sup>	1.8 yd <sup>3</sup>
Tire used for below data	15.5 R25 L2 XTLA		15.5 R25 L2 XTLA		15.5 R25 L2 XTLA	
** 1 Height: Ground to Cab	3020 mm	9'10"	3020 mm	9'10"	3020 mm	9'10"
** 2 Height: Ground to Beacon	3210 mm	10'6"	3210 mm	10'6"	3210 mm	10'6"
** 3 Height: Ground Axle Center	600 mm	1'11"	600 mm	1'11"	600 mm	1'11"
** 4 Height: Ground Clearance	348 mm	1'1"	348 mm	1'1"	348 mm	1'1"
* 5 Length: Overall	6337 mm	20'9"	6394 mm	20'11"	6269 mm	20'6"
6 Length: Rear Axle to Bumper	1634 mm	5'4"	1634 mm	5'4"	1590 mm	5'2"
7 Length: Hitch to Front Axle	1300 mm	4'3"	1300 mm	4'3"	1300 mm	4'3"
8 Length: Wheel Base	2600 mm	8'6"	2600 mm	8'6"	2600 mm	8'6"
* 9 Clearance: Bucket at 45 Degrees	2809 mm	9'2"	2772 mm	9'1"	2846 mm	9'4"
** 10 Clearance: Load Over Height	3284 mm	10'9"	3284 mm	10'9"	3284 mm	10'9"
** 11 Clearance: Level Bucket	3418 mm	11'2"	3418 mm	11'2"	3418 mm	11'2"
** 12 Height: Bucket Pin	3673 mm	12'0"	3673 mm	12'0"	3673 mm	12'0"
** 13 Height: Overall	4563 mm	14'11"	4599 mm	15'1"	4563 mm	14'11"
* 14 Reach: Bucket at 45 Degrees	820 mm	2'8"	863 mm	2'9"	788 mm	2'7"
15 Carry Height: Bucket Pin	319 mm	1'0"	317 mm	1'0"	319 mm	1'0"
** 16 Dig Depth	117 mm	4.5"	117 mm	4.5"	117 mm	4.5"
17 Width: Bucket	2401 mm	7'10"	2401 mm	7'10"	2401 mm	7'10"
18 Width: Tread Center	1800 mm	5'10"	1800 mm	5'10"	1800 mm	5'10"
19 Turning Radius: Over Bucket	5199 mm	17'0"	5216 mm	17'1"	5180 mm	16'11"
20 Width: Over Tires	2259 mm	7'4"	2259 mm	7'4"	2259 mm	7'4"
21 Turning Radius: Outside of Tires	4716 mm	15'5"	4716 mm	15'5"	4716 mm	15'5"
22 Turning Radius: Inside of Tires	2446 mm	8'0"	2446 mm	8'0"	2446 mm	8'0"
23 Rack Angle at Full Lift	57 degrees		57 degrees		57 degrees	
24 Dump Angle at Full Lift	47 degrees		48 degrees		48 degrees	
25 Rack Angle at Carry	42 degrees		42 degrees		42 degrees	
26 Departure Angle	33 degrees		33 degrees		33 degrees	
27 Articulation Angle	40 degrees		40 degrees		40 degrees	
*Tipping Load – Straight (ISO 14397-1)	5845 kg	12,882 lb	5709 kg	13,105 lb	6187 kg	13,635 lb
*Tipping Load – Full Turn (ISO 14397-1)	4898 kg	10,795 lb	4779 kg	10,532 lb	5207 kg	11,475 lb
*Breakout Force	6741 kg	14,857 lb	6298 kg	11,632 lb	7327 kg	16,148 lb
*Operating Weight	8086 kg	17,822 lb	8109 kg	18,102 lb	7899 kg	17,408 lb

Dimensions listed are for a machine configured with bolt-on cutting edges and an 80 kg (176 lb) operator.

# 910 Compact Wheel Loader

## Dimensions and Operating Specifications (All dimensions are approximate. Dimensions vary with bucket and tire choice.)

	High Lift – IT		High Lift – ISO		High Lift – Pin On	
	1.3 m <sup>3</sup>	1.7 yd <sup>3</sup>	1.3 m <sup>3</sup>	1.7 yd <sup>3</sup>	1.4 m <sup>3</sup>	1.8 yd <sup>3</sup>
Bucket @100% fill factor used for below data						
Tire used for below data	15.5 R25 L2 XTLA		15.5 R25 L2 XTLA		15.5 R25 L2 XTLA	
** 1 Height: Ground to Cab	3020 mm	9'10"	3020 mm	9'10"	3020 mm	9'10"
** 2 Height: Ground to Beacon	3210 mm	10'6"	3210 mm	10'6"	3210 mm	10'6"
** 3 Height: Ground Axle Center	600 mm	1'11"	600 mm	1'11"	600 mm	1'11"
** 4 Height: Ground Clearance	348 mm	1'1"	348 mm	1'1"	348 mm	1'1"
* 5 Length: Overall	6869 mm	22'6"	6926 mm	22'8"	6802 mm	22'3"
6 Length: Rear Axle to Bumper	1634 mm	5'4"	1634 mm	5'4"	1590 mm	5'2"
7 Length: Hitch to Front Axle	1300 mm	4'3"	1300 mm	4'3"	1300 mm	4'3"
8 Length: Wheel Base	2600 mm	8'6"	2600 mm	8'6"	2600 mm	8'6"
* 9 Clearance: Bucket at 45 Degrees	3176 mm	10'5"	3140 mm	10'3"	3219 mm	10'6"
** 10 Clearance: Load Over Height	3397 mm	11'1"	3397 mm	11'1"	3397 mm	11'1"
** 11 Clearance: Level Bucket	3774 mm	12'4"	3774 mm	12'4"	3775 mm	12'4"
** 12 Height: Bucket Pin	4030 mm	13'2"	4030 mm	13'2"	4030 mm	13'2"
** 13 Height: Overall	4920 mm	16'1"	4955 mm	16'3"	4891 mm	16'0"
* 14 Reach: Bucket at 45 Degrees	1054 mm	3'5"	1100 mm	3'7"	1004 mm	3'3"
15 Carry Height: Bucket Pin	480 mm	1'6"	480 mm	1'6"	480 mm	1'6"
** 16 Dig Depth	295 mm	11.6"	295 mm	11.6"	294 mm	11.6"
17 Width: Bucket	2401 mm	7'10"	2401 mm	7'10"	2401 mm	7'10"
18 Width: Tread Center	1800 mm	5'10"	1800 mm	5'10"	1800 mm	5'10"
19 Turning Radius: Over Bucket	5440 mm	17'10"	5452 mm	17'10"	5419 mm	17'9"
20 Width: Over Tires	2259 mm	7'4"	2259 mm	7'4"	2259 mm	7'4"
21 Turning Radius: Outside of Tires	4716 mm	15'5"	4716 mm	15'5"	4716 mm	15'5"
22 Turning Radius: Inside of Tires	2446 mm	8'0"	2446 mm	8'0"	2446 mm	8'0"
23 Rack Angle at Full Lift	59 degrees		60 degrees		59 degrees	
24 Dump Angle at Full Lift	43 degrees		44 degrees		44 degrees	
25 Rack Angle at Carry	50 degrees		49 degrees		50 degrees	
26 Departure Angle	33 degrees		33 degrees		33 degrees	
27 Articulation Angle	40 degrees		40 degrees		40 degrees	
*Tipping Load – Straight (ISO 14397-1)	5099 kg	11,239 lb	4998 kg	11,014 lb	5388 kg	11,875 lb
*Tipping Load – Full Turn (ISO 14397-1)	4240 kg	9,344 lb	4150 kg	9,146 lb	4503 kg	9,925 lb
*Breakout Force	6800 kg	14,987 lb	6351 kg	13,998 lb	7392 kg	16,291 lb
*Operating Weight	8428 kg	18,575 lb	8450 kg	18,624 lb	8240 kg	18,161 lb

Dimensions listed are for a machine configured with bolt-on cutting edges and an 80 kg (176 lb) operator.

For more complete information on Cat products, dealer services, and industry solutions, visit us on the web at [www.cat.com](http://www.cat.com)

© 2020 Caterpillar  
All rights reserved

Materials and specifications are subject to change without notice. Featured machines in photos may include additional equipment. See your Cat dealer for available options.

CAT, CATERPILLAR, LET'S DO THE WORK, their respective logos, "Caterpillar Yellow," the "Power Edge" and Cat "Modern Hex" trade dress as well as corporate and product identity used herein, are trademarks of Caterpillar and may not be used without permission.

AEHQ8246 (02-2020)  
Build Number: 14A  
(EU, Am North)

